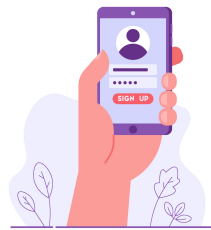
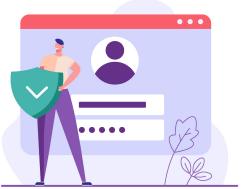
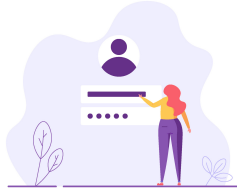
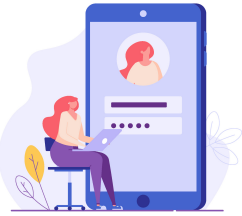




TOWNSHIP OFFICIALS OF ILLINOIS RISK MANAGEMENT ASSOCIATION

RISK REMINDER



MULTI-FACTOR AUTHENTICATION

Five facts about multi-factor authentication (MFA) that will help you make a case for implementation at your township or road district:

- **MFA takes a layered approach:** One of the main benefits of MFA is that it provides an additional layer of protection for systems used by non-technical employees. With MFA, employees can still use their username/password, but an extra step/layer is added into the account access process, such as a confirmation email, text message or phone call, or push notification via an app.
- **MFA protects your data:** By implementing MFA, cyber criminals will have a much harder time accessing corporate data through stolen credentials because of the multi-tier authentication process.
- **MFA helps meet compliance guidelines:** Cyber security guidelines require a firm grasp of identity management, and MFA is an important step in achieving this. As more critical data moves out of on-site data centers into the cloud, the process for protecting that information must be considered.
- **MFA is currently a part of life:** MFA for personal use is already a part of our lives. Banking, social media, or web email providers, have adopted tools to authenticate users when accessing their systems.
- **MFA is essential:** Without user authentication, the door to your network is wide open. MFA implementation is essential to strengthening your organization's cyber security.

TOIRMA recommends consulting your IT Department with any questions.

For more information, contact your Loss Control Consultant at (888) 562-7861

CLAIM REPORTING HOTLINE (844) 562-2720 | Available 24/7